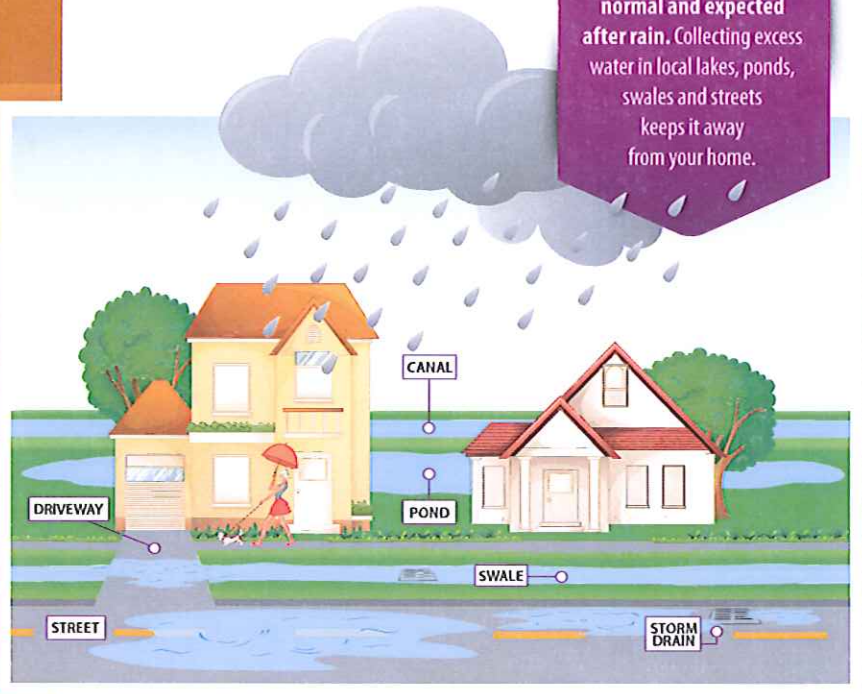


Rainy Season CHECKLIST

- ✓ Recognize that flood control is a shared responsibility.
- ✓ Know the agency responsible for managing nearby canals.
- ✓ Understand YOUR neighborhood drainage limitations. Every neighborhood drains differently.
- ✓ If you are part of a homeowners association, identify the HOA representative authorized to operate any water control structures.
- ✓ Check for any structure, storm drain or canal blockages – remove debris and/or report any issues.
- ✓ Be aware that extreme rain can overwhelm drainage systems and result in temporary flooding.

What to expect when it RAINS

Some standing water is normal and expected after rain. Collecting excess water in local lakes, ponds, swales and streets keeps it away from your home.



What can SLOW the FLOW?

Intensity of rainfall.

If the ground is already saturated and community lakes and canals are high from previous rains, water will take longer to recede.

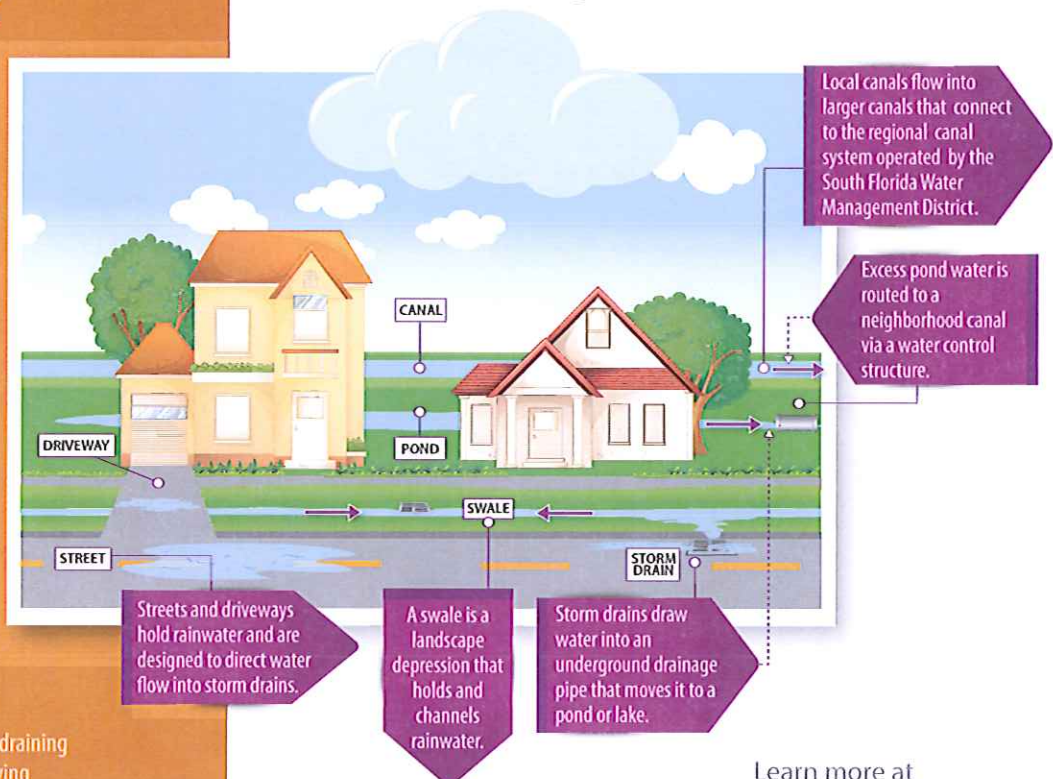
Extent of rainfall.

If other neighborhoods are experiencing heavy rains, local and regional canals may not be able to accept all inflows at once.

Poorly maintained facilities.

Clogged or damaged facilities can prevent neighborhood water from draining properly. Also, some low-lying neighborhoods are prone to flooding.

How excess rainwater DRAINS



Learn more at sfwmd.gov/rainyseason